

CONRAD[®]
KOH SAMUI

GUEST SERVICES DIRECTORY

W E L C O M E
T O C O N R A D
K O H S A M U I

Sawasdee krub and welcome to Conrad Koh Samui!

We hope you enjoy a truly delightful and memorable stay with us. Our team is dedicated to providing the highest level of personalized service, ensuring every moment is exceptional.

We invite you to immerse yourself in the richness of Thai culture while relaxing in our contemporary and stylish surroundings. From unique dining experiences and indulgent spa treatments to scenic boat excursions and the comfort of your private pool, our aim is to create an unforgettable holiday, leaving you with lasting memories of legendary Thai hospitality.

Our resort offers a wide range of amenities, entertainment options, lifestyle activities, and world-class dining experiences designed to delight throughout your stay.

Should this directory not contain the information you are seeking, please do not hesitate to reach out to any of our team members or contact Conrad Service, and we will be happy to assist you promptly.

Thank you for choosing to stay with us and for giving us the opportunity to serve you in one of the world's finest resort destinations.

Sincerely yours,
Conrad Koh Samui



Marco Araujo
GENERAL MANAGER

E N V I R O N M E N T A L & S O C I A L S U S T A I N A B I L I T Y P O L I C Y

At Conrad Koh Samui, we recognize the importance of fostering a sustainable environment for our guests, local community, and team members. As part of the Hilton Worldwide family, our participation in the LightStay program supports our mission to promote sustainable travel and tourism while safeguarding the long-term future of the industry.

We are committed to complying with all relevant international and local environmental, occupational health and safety, hygiene, and employment regulations. Each year, we set performance-based objectives to achieve our LightStay goals, including reducing water consumption, minimizing solid waste, and improving overall environmental sustainability.

Our sustainability policies are communicated to team members, suppliers, and guests and are available upon request to the local community. We actively involve all stakeholders, guests, team members, and local partners, in our environmental programs.

Conrad Koh Samui leads sustainable practices across the island, exemplified by Iris Farm, our eco-conscious initiative dedicated to environmental preservation and sustainability across all resort operations, from farm-to-table dining to wellness experiences.

We also support the local community through direct and indirect employment opportunities and by sourcing local products whenever possible.

The Conrad Koh Samui Management and Environmental Committee are fully committed to this policy and review it annually to ensure continuous improvement and alignment with our sustainability goals.



DIRECTORY MENU

<u>OUR FACILITIES</u>	4
<u>IN-HOUSE EXPERIENCES</u>	6
<u>RESTAURANTS & BARS</u>	11
<u>SERVICES & AMENITIES</u>	14
<u>CONRAD SPA</u>	25
<u>TELEPHONE & INTERNET</u>	27
<u>CHANNEL GUIDE</u>	36
<u>ISLAND GUIDE</u>	38



**O U R
F A C I L I T I E S**

MAIN POOL

Surrounded by lush tropical landscapes, our main infinity-edge pool offers breathtaking ocean views—a perfect setting for both exercise and gentle relaxation. Enjoy refreshing cocktails, light snacks, and poolside specialties served from Azure.

6:00 am to 9:00 pm
Ext. 8242

PRIVATE BEACH

Escape to our serene private beach with calm waters and soft sand. Water sports equipment, including kayaks, stand-up paddleboards, jet skis, banana boats, and snorkeling gear, is available for your enjoyment.

8:00 am to 6:00 pm

KARAOKE ROOM

Sing your heart out with friends and family in our retro-inspired Karaoke room, featuring top-of-the-line audio-visual equipment for endless fun. *Book in advance*

KIDS' CLUB

A safe and engaging space for children, the Kids' Club offers activities, games, and crafts supervised by our experienced team.

10:00 am to 6:00 pm (Closed 12:00 noon to 1:00 pm)
Ext. 8340

FITNESS CENTER

Our state-of-the-art fitness center features cardio machines, free weights, and strength training equipment. Towels, water, fresh fruit, headphones, massage gun and heart rate monitor (upon request) are available.

24 hours, 7 days a week
Ext. 8503

SILAPA ART GALLERY & BOUTIQUE SHOP

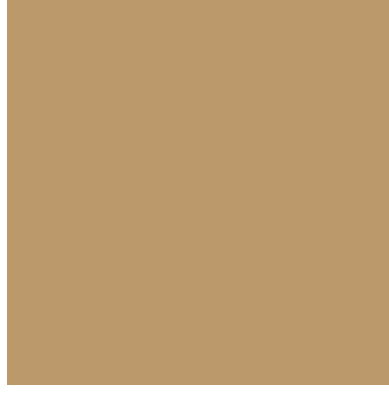
Explore SILAPA, our boutique shop and curated art gallery, featuring rotating exhibitions by talented Thai artists. Guests are welcome to visit during opening hours.

11:00 am to 6:00 pm
Ext. 8113

STARLIGHT LOUNGE

Step into our vibrant entertainment room, a hub for friendly competition, laughter, and relaxation. Enjoy a curated selection of movies, games, and interactive experiences, a perfect place to unwind and connect. *Book in advance.*

11:00 am to 11:00 pm



**I N - H O U S E
E X P E R I E N C E S**

IN - HOUSE WORKSHOPS

AROMA CANDLE MAKING WORKSHOP

Join us for a serene candle-making workshop, where you will discover the art of crafting your own bespoke aromatic candles through a hands-on and immersive experience.

COFFEE ROASTING WORKSHOP

Discover the art of coffee roasting at Botanikka, using locally sourced beans from Northern Thailand.

COFFEE MASTER WORKSHOP

Join us at Botanikka for an immersive coffee masterclass, perfect for enthusiasts looking to refine their skills behind every exceptional cup. *Paid activity*

DIY BODY SCRUB WORKSHOP

Create your own natural body scrub using skin-nourishing ingredients in this hands-on experience. Blend essential oils, salts, sugars, and botanicals to craft a personalized scrub that exfoliates and revitalizes your skin. Take home your bespoke creation to continue the spa experience.

IRIS FARM TOUR

Explore Iris Farm, our 8,000 sqm organic farm, which proudly supplies 70% of the fresh fruits, herbs, and vegetables used across our restaurants and bars.

KOMBUCHA MAKING WORKSHOP

Learn the art of crafting our signature homemade kombucha at Botanikka in this interactive and refreshing workshop.

RELAXING BATH TEA BAG EXPERIENCE

Discover the traditional ritual of creating herbal bath sachets using Thai herbs, flowers, and essential oils. Designed to release natural healing properties, this experience helps ease muscle tension and restore energy. Best enjoyed in your private in-villa plunge bath for ultimate relaxation.

Please contact Conrad Service by dialing "0" on your room phone for further information and reservations.

SLEEPING MIST WORKSHOP

Relax and find peace by creating your own pillow mist infused with calming essential oils. Learn to blend natural scents that promote restful sleep and reduce stress. Perfect for evening routines or as a thoughtful gift, "turn bedtime into a beautiful ritual of relaxation."

TEA SENSORY WORKSHOP

Immerse yourself in a unique tea blending experience and craft your own personalized tea blends, tailored to your taste and aroma preferences.
Paid activity

THAI HERBAL COMPRESS

Join our farm-to-wellness session at the Spa and craft a traditional Thai herbal compress using organic ingredients from Iris Farm. Discover the ancient healing benefits of this time-honored wellness ritual.

THAI INHALER WORKSHOP

Explore the art of aromatherapy by creating your own traditional Thai inhaler, infused with a refreshing blend of medicinal plants and essential oils. Ideal for promoting wellness and relaxation on the go.

Please contact Conrad Service by dialing "0" on your room phone for further information and reservations.

IN-HOUSE ACTIVITIES

AQUA AEROBICS

Invigorate your body with our energizing aqua aerobics. This low-impact, high-fun activity is excellent for boosting both mind and body. No experience necessary, just bring your enthusiasm, and we will take care of the rest.

BANANA BOAT

Enjoy thrilling rides on the waves with our banana boat experience. *Paid activity*

BEACH VOLLEYBALL

Join us for an exciting game of beach volleyball on the sands of Koh Samui. Whether you are a seasoned pro or just looking to have fun in the sun, everyone is welcome to play.

JET SKI

Experience an exhilarating jet ski ride and explore the scenic coastal views. *Paid activity*

LONG-TAIL BOAT TRIP

Discover the beauty of Koh Madsum and Koh Tan on a traditional long-tail boat adventure. *Paid activity*

STRETCHING

Unwind and refresh with a gentle stretching session. Release tension, improve flexibility, and leave feeling revitalized. Give your body the care it deserves.

TAI CHI

Rejuvenate with the ancient art of Tai Chi. This serene session brings balance to mind, body, and spirit. Perfect for all ages and fitness levels, it helps improve flexibility, reduce stress, and cultivate inner peace.

Please contact Conrad Service by dialing "0" on your room phone for further information and reservations.

THAI COOKING CLASS

Embark on an exquisite culinary journey with a 2-course Thai cooking class led by our skilled chefs. *Paid activity*

THAI BOXING

Join us for an authentic Thai boxing session and discover a dynamic blend of fitness, discipline, and cultural immersion. A truly unique way to enjoy an unforgettable workout and experience Thai culture.

YOGA

Embrace the tranquility of Koh Samui with our complimentary morning yoga sessions. Guided by friendly instructors, practice gentle poses and mindful breathing to leave you feeling refreshed, invigorated, and ready to embrace your day.

Please contact Conrad Service by dialing "0" on your room phone for further information and reservations.



**R E S T A U R A N T S
& B A R S**



A O W T H A I

A leisurely dining experience with both indoor and outdoor seating, offering scenic horizons above the Aow Thai - Gulf of Thailand. From international breakfast favourites to flavourful Thai dinners, every dish is crafted with care.

**Breakfast 7:00 am to 10:30 am |
Lunch & Dinner 12:00 noon to 11:00 pm,
7 days a week**

Ext. 8210



A Z U R E

From the glistening blues of midday to the warm hues of sunset, Azure is the resort's Mediterranean haven by the infinity pool. Offering a relaxed yet refined poolside retreat, it serves fresh cuisine paired with refreshing cocktails, perfect for a leisurely lunch or sunset dinner by the water.

**Lunch & Dinner 11:00 am to 10:00 pm, 7 days
a week**

Ext. 8242



J A H N

At this mountaintop sanctuary, just 24 intimate seats overlook endless ocean views as the chef masterfully reinvents premium cuts over charcoal. Elevated dining unfolds through refined techniques and subtle Thai influences, with each dish thoughtfully paired with exceptional wines, crafting a journey of flavor, artistry, and unforgettable ambiance.

Dinner 5:00 pm to 11:00 pm, 7 days a week

Ext. 8220



K O L O U N G E

With mesmerizing coastal views and contemporary Thai-inspired design, this is the perfect setting for sunset cocktails, comfortable bites, and live music in a relaxed yet refined atmosphere.

3:00 pm to midnight, 7 days a week

Ext. 8107



SEAKRET BAR

A rustic beach bar offering stunning seascapes and the soothing sound of ocean waves, serving tropical cocktails and handcrafted concoctions paired with flavorful bar snacks.

11:00 am to 7:00 pm, 7 days a week



BOTANIKKA

With sustainability at its core, Botanikka Café is a vibrant, design-forward hub that embraces a hip, eco-conscious vibe. Surrounded by panoramic sea views, this stylish café champions zero-waste principles and features locally sourced produce for an authentic organic journey.

9:00 am to 6:00 pm, 7 days a week

Ext. 8112



PRIVATE IN-VILLA BBQ

Watch as a personal chef and retinue of servers deftly prepare your dining choices 'In-Villa' to ensure the utmost freshness.

For reservations contact Conrad Service.

Ext. 0

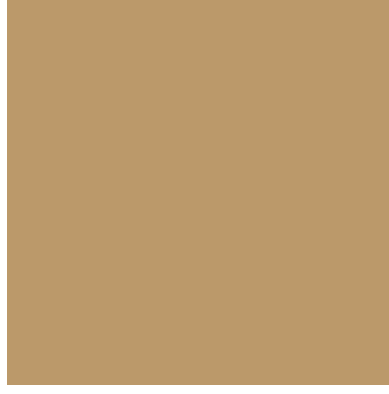


DESTINATION DINING

The essence of island luxury comes to life through unforgettable culinary experiences. Begin with a Floating Breakfast served in the peaceful privacy of your infinity pool villa, or dine by the beach or by the pier.

For reservations contact Conrad Service.

Ext. 0



**S E R V I C E S &
A M E N I T I E S**

S E R V I C E S & A M E N I T I E S

Adaptors

Electrical adaptors are available. Press the Conrad Service button on your telephone for assistance.

Air-Conditioning

The room temperature within your villa can be individually adjusted through the control located near the entrance. Simply select the desired temperature. To maintain the desired temperature, please kindly be advised to keep the door closed at all times.

Airline Reservation and Airport Transportation

The only airport on the island is Samui International Airport (USM), which is located 31.2 kilometers from the resort and approximately a 58-minute drive in normal traffic. Our team members would be delighted to assist you with an online reservations and flight check-in for your convenience or with your airport transfer reservation needs.

Ext. 0

Automated Teller Machine

The nearest ATM is located near the lobby area. Please contact our Conrad Service or Guest Services for directions.

Baby Cots & Chairs

Contact details for Baby Cots & Chairs are available and can be provided should you require these services. For more information and requests, please contact our Housekeeping and Guest Services team.

Ext. 0

Baby Sitting

In-villa babysitting services is available. Kindly notify us at least three hours in advance by contacting our Conrad Service. Press the Conrad Service button on your telephone.

Banks

Krungthai Bank and Krungsri Bank are located approximately 19 kilometers away from the resort or approximately a 34-minute drive in normal traffic. Please contact the Conrad Service or Guest Services for directions.

Ext. 0

Baggage Service

Baggage Service and luggage assistance are available 24 hours. Press Conrad Service on your telephone for assistance.

Bathrobes

Plush bathrobes are available in your villa for your comfort. Additional bathrobes or different sizes are available upon your request. Please contact Housekeeping or Conrad Service for assistance.

Ext. 0

Car Rental

Car rental arrangements are available and can be made through our Conrad Service or Guest Services team, including chauffeur-driven services. Please contact the Conrad Service or Guest Services for more information and reservations.

Ext. 0

Check-In/Check-Out

Check-in time is at 3:00 pm and check-out time is at 12 noon. Please contact Guest Services should you wish to extend your stay with us or request an extended check-out time. Please be advised that late check-out fees may apply and are subject to availability.

Conrad Service

Our Concierge team is ready to assist you with your social, business and limousine arrangements. Simply press the Conrad Service button on the telephone for any request you may have.

Courier

Courier and express mail services are available through our Guest Services team. Packaging materials can be provided upon request.

Ext. 8105

Credit Cards

Accepted credit cards: American Express, JCB, Mastercard, Visa, Alipay and WeChat pay. Should you wish to make other credit arrangements, contact the Concierge or press the Conrad Service button on your telephone.

Currency Exchange

Provided at the Concierge. Press the Conrad Service button on your telephone for more information

Drinking Water

Complimentary bottled drinking water is available in the villa. Water from the tap is not drinkable.

Drones

Due to safety and privacy concerns, Conrad Koh Samui prohibits the operation or use on or above resort property of unmanned aerial systems, or drones, by the general public - including recreational users and hobbyists - without the prior written authorization from Conrad Koh Samui. This prohibition includes drones used for filming or videotaping, as well as any drone use by media or journalists operating above or within the resort boundaries. Please contact the manager on duty and press the Conrad Service button on your telephone for further information.

Electricity & Voltages

The voltage is 220 volts throughout the resort. For your convenience, transformers and adapters can be obtained from our team members. Please contact Conrad Service for more information and assistance. All outlets are 220V/50 Hz. In the bathroom, a 240/110V shaver outlet is provided on the vanity counter.

Emergency

Press the Emergency button on your telephone or dial 0.

Engineering

For any technical assistance in your room, press the Conrad Service button on the telephone.

Express Check Out

We can arrange for your bill to be delivered to your villa the night before your check out. Press the Conrad Service button on your telephone for assistance.

Flashlight

Available in the walk-in wardrobe.

Flowers & Balloons

Special arrangements are available upon request. Please contact our Guest Services to discuss your personalized requirements.

Ext. 8105

Food Delivery

External food delivery services to the resort are permitted. Our in-villa dining also offers an extensive menu. Please contact In-villa dining for more information.

Foreign Language Assistance

Press the Conrad Service button on your telephone for more information.

Guest Registration

According to government regulations, all guests are required to register with the resort.

Guest Key Cards

Key cards are re-programmed with every new guest's stay. Please retain it until check-out. If your key card is misplaced, please contact Conrad Service and a new key card will be issued.

Hair Styling

Hair styling and grooming services can be arranged in your villa. Please contact our Conrad Service for more information, and it is recommended to book at least 48 hours in advance.

Ext. 0

Hilton Honors

Earn and redeem Hilton Honors points with your stay at our resort. For assistance with your membership or account benefits, please contact Conrad Service.

Ext. 8105

Housekeeping Supplies

Housekeeping will provide special guest room amenities. Bed boards, foam pillows, extra blankets and baby cribs among others are available upon request. A pillow menu can be found in your bedside table. The Conrad Service button on your telephone for assistance.

Ice

Ice is available upon request through in-villa dining. Please contact our in-villa dining to place an order.

In-Room Dining

Savor private dining in the comfort of your own villa complemented by stunning ocean views, for a truly intimate experience. From light snacks available in the mini-bar to a curated culinary journey.

In-Villa Bar

Every guest villa is equipped with an In-villa bar and refrigerator, containing a range of chilled beverages and a variety of popular snacks that are replenished daily. All food and beverages will be charged to your account upon consumption. Please contact Conrad Service for more information and replenishment.

Internet

WiFi internet access is available in the villas and the public areas.

Jogging

An outdoor jogging track is available at the resort.

Laundry & Dry-Cleaning

Same-day service is available if items are received by 9:00 am. Two-hour express laundry pressing service is available 24 hours. Laundry bags are in the wardrobe closet. For pick-up or other requests, press the Conrad Service button on your telephone.

Lost & Found

Press the Conrad Service button on your telephone.

Medical Services

Doctors are on-call and near by hospitals are available 24 hours. Press the Conrad Service button on your telephone for assistance.

Message

We provide a voicemail service. To retrieve your message, press the message button.

Privacy

When you do not wish to be disturbed, turn on the "Do Not Disturb" light and double lock your door. A safety latch to prevent entry to your villa and a door viewer port are also provided.

Religious Services

Many faiths are represented locally. Please contact Conrad Service for service schedules and locations. A Bible is available in the drawer next to the bed. Prayer mats and compasses are available upon request.

Safety

For your safety, familiarize yourself with the floor plan, which can be found behind your villa door. The emergency procedures are explained in this directory.

Safe Deposit Boxes

A complimentary personal safe is located in the closet. Conrad Koh Samui cannot be held responsible for valuables left unattended in your villa. Large safe-deposit boxes are available at the Concierge.

Stationery

A set of complimentary stationery is available in your villa. Additional items are available upon request. Please contact Housekeeping for assistance or delivery.

Ext. 8502

Security

For added security, use the safety latch and porthole in your room. Please familiarize yourself with the security procedures in this directory.

Service Charge

A 10% service charge and applicable local government taxes are added to your account for accommodation and other services. Further tipping is at your discretion.

Shoe Shine

Complimentary shoe shine is provided. Press the Conrad Service button on your telephone.

Smoke Detectors

For your safety, smoke detectors are located in every villa, restaurant and public area.

Spa

Conrad Spa offers a range of massage and beauty treatments. Open daily from 9:00 am to 9:00 pm. Press the Conrad Service button on your telephone for further information.

Toiletries

Luxury and spa-quality amenities by Byredo are provided in your villa. Additional items, including dental and shaving kits, are available upon request. Please contact Housekeeping for further assistance.

Ext. 8502

Turndown Service

Evening turndown service is offered daily at around 5:00 pm. Please contact Housekeeping should you wish to adjust the turndown service timing.

Ext. 8502

Transportation

Limousine Service is available at the resort. Press the Conrad Service button on the telephone for assistance.

Wake-Up Calls

Press the Wake-Up Call or Conrad service button on your telephone.

Wildlife

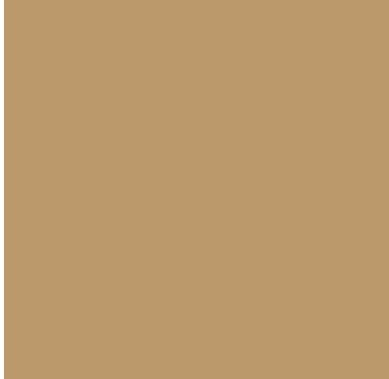
Do not attempt to handle any local wildlife you may encounter on the island. For assistance contact Conrad Service.

Yoga Mat

Available upon request. Press the Conrad Service button on your telephone.

Younger Guests

Press the Conrad Service button on your telephone for special infant amenities. For information on activities for children and the Turtle Club, press the Conrad Service button on the telephone.



**C O N R A D
S P A**

CONRAD SPA



Conrad Spa invites you to embark on a rejuvenating journey crafted by authentic rituals, innovative treatments, and a profound connection to Koh Samui's natural beauty. Fusing modern luxury with ancient healing, each experience is carefully designed to restore your body, mind, and spirit, all set against stunning views of the Gulf of Thailand. Begin with an authentic welcome ritual, followed by therapies inspired by traditional Thai wellness practices. Each treatment is designed to enhance your journey, whether in our sauna and steam room, where the Himalayan salt wall promotes deep relaxation and radiant skin. Each treatment seamlessly combines modern luxury with time-honored healing practices to foster well-being. Complete your journey by unwinding in the soothing lounge and savoring local, sustainable delights, a true sanctuary of holistic well-being.

Conrad Spa also offers a myriad of healthcare and wellness services, including a complimentary 60-minute use of the Sauna and Steam Room with a Himalayan Salt Wall for an elevated experience.

9:00 am to 9:00 pm
Ext. 8902



**T E L E P H O N E
& I N T E R N E T**

TELEPHONE GUIDE

Country/Region Name	Code	Rates (Baht/Minute)
Local Call	07	11/call
Thailand Yellow Pages	1188	30
Thailand Telephone Directory	133	15/mm
Mobile Phone	081	30
Mobile Phone	083	30
Mobile Phone	084	30
Mobile Phone	085	30
Mobile Phone	086	30
Mobile Phone	087	30
Mobile Phone	089	30
Toll Free Number	800	110/call
AT&T	999	110/call
Collect Call	0	110/call

DIALING INSTRUCTIONS

Call	Dial	Rates
Villa-to-Villa	1 + Room Number	No Charge
Emergency	0	No Charge
Local	9 + (+66) + Number	THB 30 per minute
Toll-Free	9 + 800, 888, 877, 866, 855, 844, or 833 + Number	THB 110 per call
Canada and the U.S	9 + 1 + Area Code + Number	THB 150 per minute
Overseas	9 + Country Code + Area Code + Number	THB 150 per minute

TELEPHONE GUIDE

Country/Region Name	Code	Rates (Baht/Minute)
Afghanistan	93	150
Alaska	1907	150
Albania	355	150
Algeria	213	150
Algeria	214	150
Algeria	215	150
Andorra	376	150
Angola	244	150
Anguilla	1264	150
Antigua	1268	150
Argentina	54	150
Armenia	374	150
Aruba	297	150
Ascension	247	150
Atlantic Ocean	871	439
Atlantic Ocean	872	439
Atlantic Ocean	873	439
Atlantic Ocean	874	439
Australia	61	150
Azerbaijan	672	150
Bahamas	22	150
Bahrain	973	150
Bangladesh	880	150
Barbados	1246	150
Belarus	375	150
Belgium	32	150
Belize	50	150
Benin	229	150
Bermuda	44	150
Bhutan	915	150
Bissau	245	150
Bolivia	591	150
Bosnia	387	150

TELEPHONE GUIDE

Country/Region Name	Code	Rates (Baht/Minute)
Botswana	264	150
Brazil	55	150
British Virgin Islands	2843	150
Brunei	673	150
Bulgaria	359	150
Burkina Faso	226	150
Burundi	257	150
Cambodia	855	150
Cameroon	237	150
Cape Verde	238	150
Cayman Islands	1345	150
Celand	354	150
Central Africa	236	150
Chad	235	150
Chile	56	150
China	86	150
Comoros Islands	269	150
Congo	242	150
Congo	243	150
Cook Islands	382	150
Costa Rica	506	150
Croatia	385	150
Cuba	53	150
Cyprus	357	150
Czech Republic	42	150
Denmark	45	150
Diego Garcia	246	150
Djibouti	253	150
Dominica	1767	150
Dominican Republic	1809	150
Ecuador	593	150
Egypt	20	150
El Salvador	503	150
Equatorial Guinea	240	150

TELEPHONE GUIDE

Country/Region Name	Code	Rates (Baht/Minute)
Eritrea	291	150
Estonia	372	150
Ethiopia	251	150
Falkland Islands	500	150
Faroe Islands Fiji	298	150
Finland	679	150
France	358	150
French Guyana	33	150
French Polynesia	594	150
Gabon	691	150
Gambia	241	150
Georgia	220	150
Germany	995	150
Ghana	49	150
Gibraltar	233	150
Greece	350	150
Greenland	30	150
Grenada	299	150
Guam	1473	150
Guatemala	1671	150
Guinea	502	150
Guinea	224	150
Guyana	592	150
Haiti	509	150
Hawaii	1808	150
Holland	31	150
Honduras	504	150
Hong Kong	852	150
Hungary	36	150
India	91	150
Indonesia	62	150
Iran	98	150
Iraq	964	150
Ireland	353	150

TELEPHONE GUIDE

Country/Region Name	Code	Rates (Baht/Minute)
Israel	972	150
Italy	39	150
Ivory Coast	225	150
Jamaica	1876	150
Japan	81	150
Jordan	962	150
Kazakhstan	7	150
Kenya	254	150
Kiribati	686	150
Korea	82	150
Korea Dem. Rep. Of	850	150
Kuwait	965	150
Kyrgyzstan	996	150
Laos	856	150
Latvia	371	150
Lebanon	961	150
Lesotho	266	150
Liberia	231	150
Libya	218	150
Liechtenstein	423	150
Lithuania	370	150
Luxembourg	352	150
Macau	853	150
Macedonia	89	150
Madagascar	261	150
Malawi	264	150
Malaysia	60	150
Maldives	960	150
Mali	223	150
Malta	356	150
Marshall Island	92	150
Martinique	96	150
Mauritania	222	150
Mauritius	230	150

TELEPHONE GUIDE

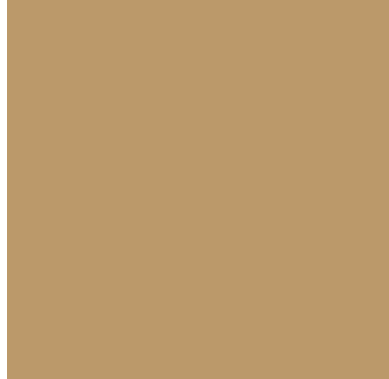
Country/Region Name	Code	Rates (Baht/Minute)
Mexico	52	150
Micronesia	689	150
Moldova	373	150
Monaco	377	150
Mongolia	976	150
Montserrat	1664	150
Morocco	210	150
Morocco	211	150
Morocco	212	150
Mozambique	258	150
Myanmar	95	150
Namibia	264	150
Nauru	674	150
Nepal	977	150
Netherlands Antilles	599	150
New Caledonia	687	150
New Zealand	64	150
Nicaragua	505	150
Niger	227	150
Nigeria	234	150
Niue	683	150
Norway	47	150
Oman	968	150
Pakistan	92	150
Palau	680	150
Palestine	970	150
Panama	507	150
Papua New Guinea	675	150
Paraguay	595	150
Peru	51	150
Philippines	63	150
Poland	48	150
Portugal	351	150
Puerto Rico	1787	150

TELEPHONE GUIDE

Country/Region Name	Code	Rates (Baht/Minute)
Qatar	974	150
Reunion Island	262	150
Rwanda	250	150
Saipan	1670	150
Saipan Is.	670	150
Samoa (USA)	684	150
San Marino	378	150
Saotome	239	150
Saudi Arabia	966	150
Senegal	221	150
Seychelles	248	150
Sierra Leone	232	150
Singapore	65	150
Slovak Republic	421	150
Slovenia	36	150
Solomon Islands	677	150
Somalia	252	150
South Africa	27	150
Spain	34	150
Sri Lanka	94	150
St.christopher	1869	150
St.helena	290	150
St.lucia	1758	150
St.pierre	508	150
St.vincent	1784	150
Sudan	249	150
Suriname	597	150
Swaziland	268	150
Sweden	46	150
Switzerland	41	150
Syria	963	150
Taiwan	886	150
Tajikistan	992	150
Tanzania	255	150

TELEPHONE GUIDE

Country/Region Name	Code	Rates (Baht/Minute)
Tonga	228	150
Tokelau	690	150
Togo	676	150
Trinidad	1868	150
Tunisia	216	150
Tunisia	217	150
Turkey	90	150
Turkmenistan	993	150
Turks & Caicos	1649	150
Tuvalu	688	150
U.S. Virgin Islands	1284	150
Uae	971	150
Uganda	256	150
Ukraine	380	150
United Kingdom	44	150
Uruguay	598	150
Usa/Canada	1	150
Uzbekistan	338	150
Vanuatu	648	150
Venezuela	58	150
Vietnam	54	150
Wallis & Futuna	681	150
Western Samoa	685	150
Yemen	967	150
Yugoslavia	381	150
Zambia	260	150
Zimbabwe	263	150



**C H A N N E L
G U I D E**

CHANNEL GUIDE

English ○

Thai ◇

Chinese ▱

French □

Korean ▲

Italian X

Portuguese ○

Channel #	Name	
1	Hotel Channel	
2	Workpoint	○
3	BBC World	○
4	Nickelodeon	○
5	True Sports 2	○
6	True Sports 1	○
7	Cartoon Network	○
8	Paramount	○
9	AXN HD	○
10	True Explore Wild	◇
11	NGO	○
12	CCTV 4	▱
13	KBS World	▲
14	Al Jazeera	○
15	TV 5 Monde	□
16	DW TV	○
17	France 24	□
18	Rai Italia	X
19	Phoenix InfoNews	▱
20	RTP	○
21	NHK World	○
22	THAI 3 HD	◇
23	TV 5 HD	◇
24	CH 7 HD	◇
25	MCOT SD	◇



**I S L A N D
G U I D E**

Angthong National Marine Park

Ang Thong National Marine Park is a fascinating archipelago of 42 islands northwest of Koh Samui.

Most of the islands are close to each other making a breathtaking panorama sailing around the park. All the islands are of different sizes and shapes. Most of them are covered with tropical forests and named after their distinguishing geography, a kind of descriptive appellation, such as 'Sleeping Cow Island' and 'Three Pillars Island'.

Angthong, translates as 'golden bowl', occupies almost 250 sq. km. and includes 50 sq. km. of limestone islands and karsts topography which rise from the sea as dramatic rock cliffs and bizarre rock formations. Caves, hidden lagoons and white sand beaches are there to be explored and snorkeling among the shallow coral gardens makes a popular and fascinating day trip.

Big Buddha

The Big Buddha Temple, also known as Wat Phra Yai, is a striking landmark featuring a towering, 12-meter-tall golden Buddha statue. Perched atop a hill, it offers panoramic views of the surrounding area. The temple complex also includes smaller shrines and an ornate, dragon-flanked staircase leading up to the main statue.

Cruises

Private boat charters are available with pick-up from the nearest jetty. For detailed information on suggested itineraries and excursions please contact the Conrad Service.

Diving

We partner with one of the top-rated dive companies on Koh Samui. The Gulf of Thailand has several world class diving locations that attract manta rays, turtles, dolphins and whale sharks. For further information contact Conrad Service.

Fisherman's Village

Fisherman's Village, located in Bophut, Koh Samui, is a charming and historic area that beautifully blends traditional Thai culture with modern appeal. It's famous walking street truly comes alive, especially during its night market evenings. Here, you'll find a vibrant atmosphere filled with an eclectic mix of local vendors selling handmade crafts, stylish clothing, and unique souvenirs.

Na Muang Waterfall

The waterfall is comprised of two cascades: Na Muang 1, which is easily accessible and features a large natural pool perfect for swimming, and Na Muang 2, a taller and more powerful cascade located further up the jungle, offering a more adventurous hike and stunning panoramic views.

Nathon Pier

The pier offers a glimpse into local life, with the surrounding Nathon Town featuring traditional Thai shophouses, vibrant markets, and a variety of restaurants. It often provides the first view many travelers have of Koh Samui, showcasing scenic vistas of the Gulf of Thailand and serving as a convenient starting point for exploring the island and its neighbors, as well as a stunning sunset view.

Overlap Stone

A remarkable natural wonder, consisting of two massive boulders precariously balanced atop each other. Located high in the hills, it offers breathtaking panoramic views of the island's lush landscape and sparkling coastline.

Tarnim Magic Garden

Delve into the art and architecture of Tarnim Magic Garden. Here's a short and inspiring description of Tarnim. Nestled high in the hills of Koh Samui, the Tarnim Magic Garden is a whimsical sanctuary where nature and art intertwine. Step into a world of enchanting sculptures, serene waterfalls, and lush tropical foliage, all lovingly crafted by one man's vision. It's a place that whispers tales of creativity, peace, and the enduring magic found.

Wat Kiri Wongkaram

Discover a serene and captivating temple nestled amidst the lush, green hills of Koh Samui. It's a place where ancient traditions meet breathtaking natural beauty, offering a peaceful sanctuary for reflection and spiritual renewal. The temple is particularly renowned for its striking architecture, including the intricate details of its main hall and a revered, mummified monk, Luang Pho Ruam, whose preserved body is a testament to the temple's rich history and the deep devotion of its followers.